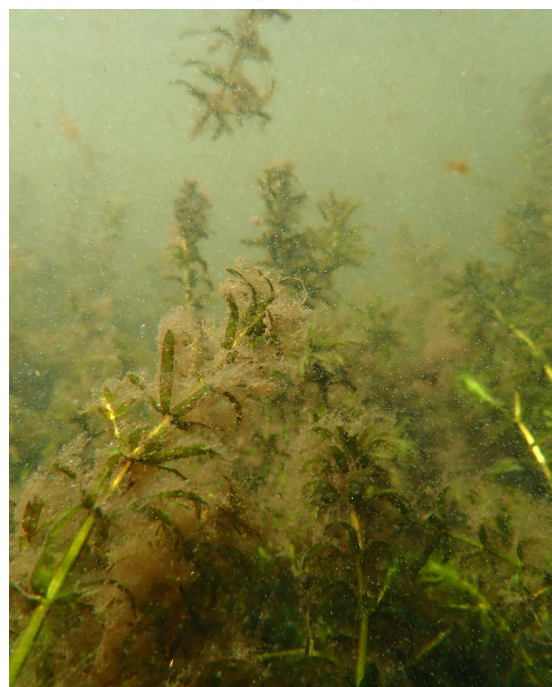
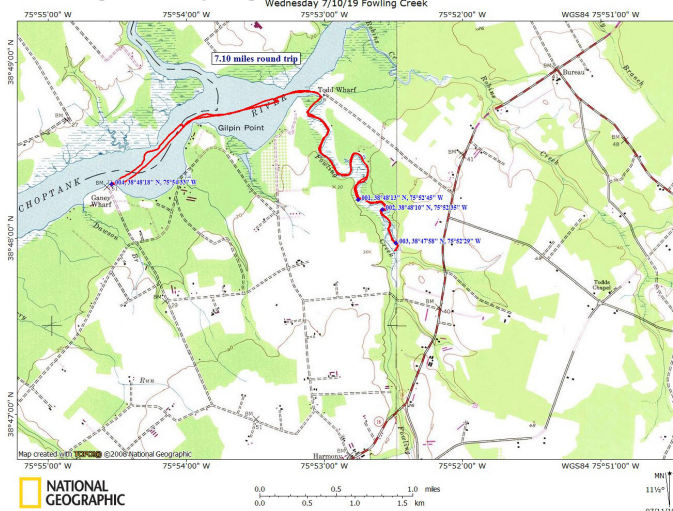


# Fowling Creek from Ganey's Wharf



Hydrilla grass found. Wild rice as well. Dead muskrat photographed. Clams also discovered



Paddling upstream from Ganey's Wharf you pass a large area of marsh on the left which conceals the mouth of the Tuckahoe. This spot on the Choptank, the confluence of the two rivers, is one of the most strikingly beautiful stretches of river on the midshore. To get to Fowling Creek is a mile and a half of open water across a small bay on the right and around Gilpin point and then across another small bay. You should be able to see the mouth of Fowling Creek as you cross the second small bay and if you turn and look over your left shoulder you can see the Tuckahoe. This day Fowling creek was full of surprises. Number one was finding Hydrilla grass less than a mile upstream. There were clams and wild rice, turtles and small fish and a belly up dead muskrat.

